

# Engineered Efficiency's ProPack CAD Manager 2010 Tools

To find out more, email [eepropack@eng-eff.com](mailto:eepropack@eng-eff.com) or call Marc Meyers at 630.773.8724 x 26


## The Interface

The user interface of EE ProPack was designed to provide an integrated look and feel of your native AutoCAD interface. Thus, all the tools for ProPack are built into an easy to use Palette. In addition, most of the tools also have an integrated AutoCAD command associated with the tool. This additional feature provides CAD Managers and others to create scripts and/or lisp routines that can easily use ProPack tools within the automation.

## Working with the Palette

ProPack's palette is automatically displayed upon installation. However, if you close the palette you can open it again using the command `EEProPack`. The command `EEProPackClose` closes the palette.

Just in case you are not good at memorizing long command names or if you prefer a more visual interface, you can click on the small

EE icon  along the status bar to close/open the ProPack palette.

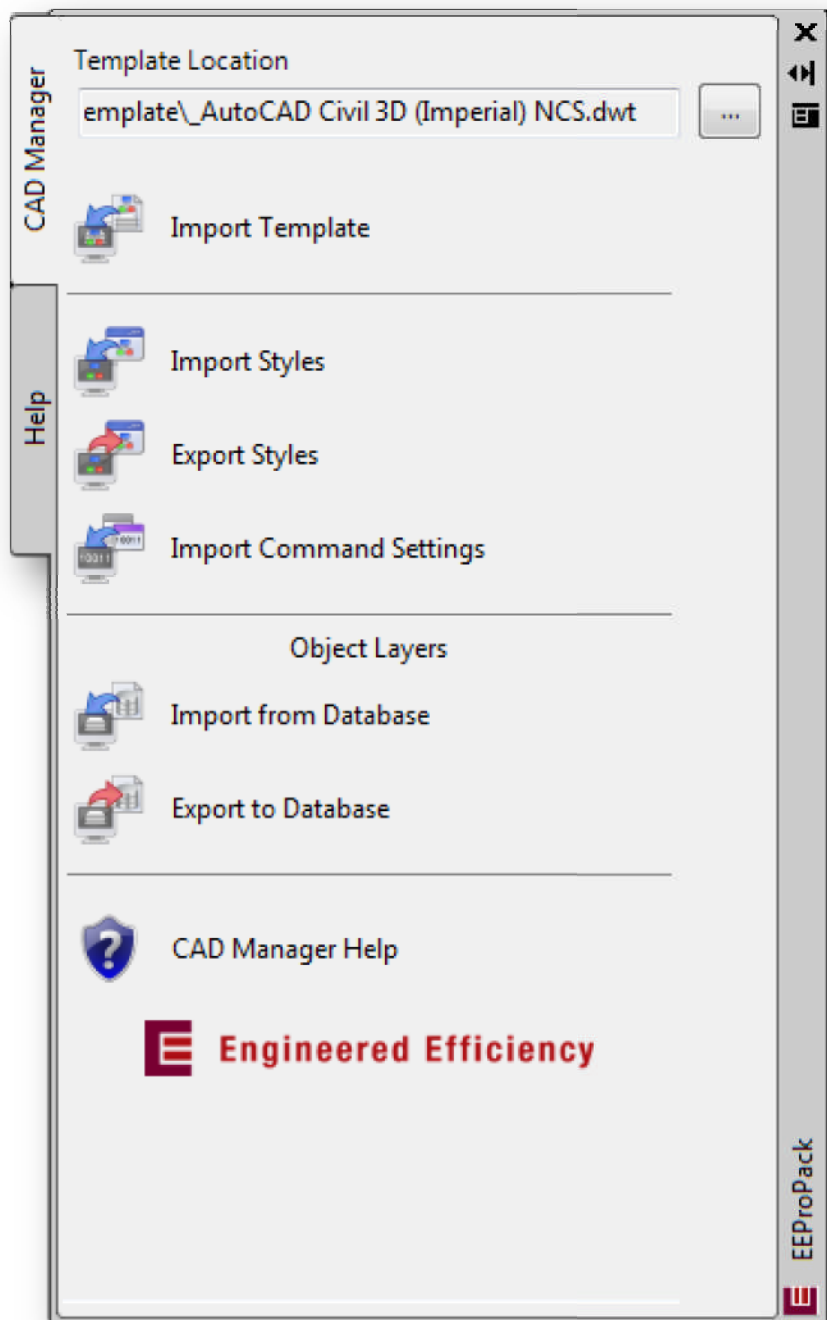
## Tool Organization

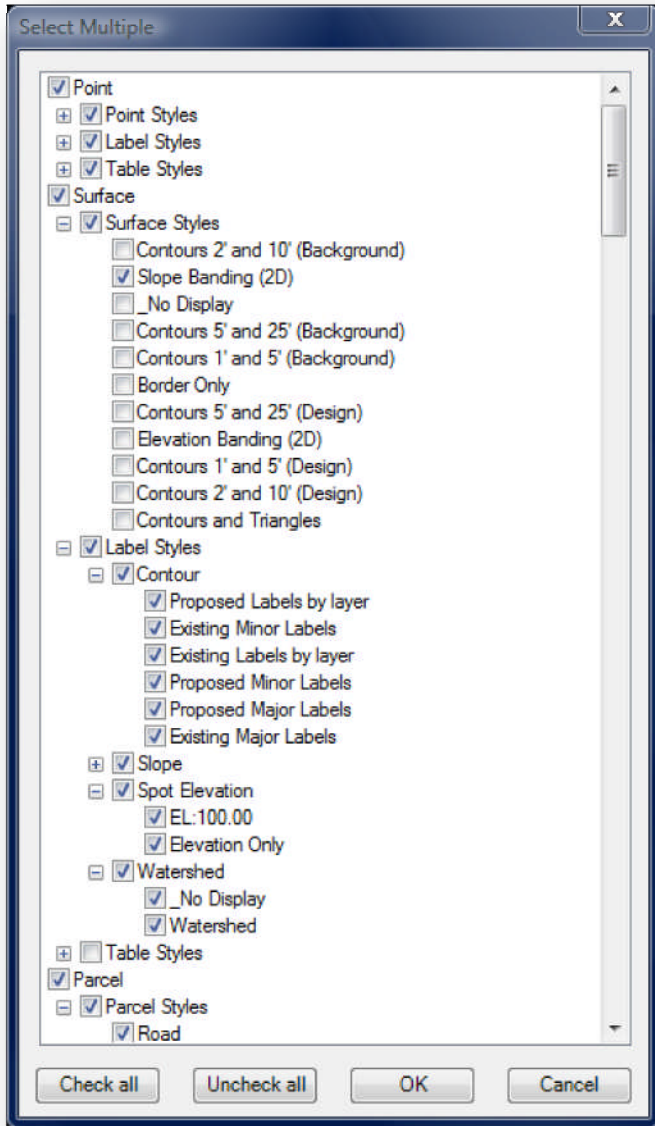
The tools provided in EE ProPack are organized in a similar pattern as are the tools found in Civil3D and are separated into different packages (CAD Manager, Base, Hydro, etc.). Let's look at the tools provided in the EE ProPack CAD Manager package.

## Import Template Tool

`ImportTemplate`

The import template tool imports (inserts) the default template or drawing file assigned in the text box above the tool. The benefit is the ability to leave your company's template set to default and quickly import all the styles from that template with a click.





## Import Styles

### ImportStyles

Sometimes you don't want the bloat of ALL of your company styles in your drawing or maybe you have deleted a style that you now need. This tool allows you to pick a drawing or template file which to grab multiple styles with a click.

## Export Styles

### ExportStyles

Similar to the import tool but ExportStyles allows you to export selected styles TO a selected drawing or template.

## Import Command Settings

### ImportCommandSettings

Importing a template or styles does not bring in the command settings with the ambient, style, and other associated settings. Using this tool will allow you to import the command settings from a selected drawing or template file.

## Object Layer Settings Import

### ImportObjectLayers

Importing styles or importing templates does not bring in the Object Layer settings. This tool allows you to select a file where you have exported the object layer settings to from your template. The file type is a Object Layer Settings File (or an OLSF) which is a simple XML file. When you select your OLSF file to import it changes all the object layer settings stored in that file.

## Object Layer Settings Export

### ExportObjectLayers

Use this tool to create the OLSF file used in the Object Layer Settings Import tool.

## ProPack Help

The EE ProPack help tab is pretty self explanatory providing an in-depth help file, information about the current version of ProPack that you are running, and an easy link to Engineered Efficiency's website so as to give you online support as well.

## Conclusion

Now is the time to get your copy of EE ProPack CAD Manager 2010!

Email: [eeopack@eng-eff.com](mailto:eeopack@eng-eff.com)

Toll Free: (866)760-8724 x 26  
ask for Marc Meyers